



PANIER-BOIS .COM



WOODEN PACKAGING SPECIALIST



WOODEN INTERIOR DESIGN AND STORAGE



MADE IN FRANCE

100%

REUSABLE



EMBALLAGES BOIS

MARTIN



Environnement
Ensemble,
respectons la forêt,
assurons sa prospérité.

PANIER-BOIS .COM

S.A.S. Martin
29 route de Champdeniers
79400 Augé

<http://www.panier-bois.com/>

For 70 years, MARTIN Emballages differentiates itself by its **ability to create and upgrade its industrial tools**.
Close to its markets, MARTIN EMBALLAGES commits to constantly developing **new, authentic, exclusive
and natural wood packaging**.

CONTACT

SALES RECEPTION

+33(0)5 49 05 22 84
commercial@emballages-martin.com

SALES DEPARTMENT

Michael BRUNEAU
+33(0)5 49 05 05 34
+33(0)6 29 46 75 14
michael.bruneau@emballages-martin.com

Dominique DUCOULOMBIER
+33(0)6 80 76 82 01
dominique.ducoulombier@emballages-martin.com



Michael BRUNEAU +33(0)6 29 46 75 14 Dominique DUCOULOMBIER +33(0)6 80 76 82 01
<http://www.emballages-martin.com/> - <http://www.panier-bois.com/>

TABLE OF CONTENTS

P.4 OUR STORY

**P.5 THE ALLIANCE OF NATURE,
TRADITIONS AND INDUSTRY**

P.8 OUR PRODUCTS

GLUED BASKETS P.8

STAPLED BASKETS P.10

GLUED AND STAPLED LIDS P.11

GLUED AND STAPLED BOWLS P.12

CRATES AND CASES P.13

SEA & SMOKED FISH BOXES P.15

TRAPEZIENNES P.16

OUR RANGE SNACKING P.18

**P.18 OUR RANGE SNACKING
AND MEALTRAY**

**P.19 OUR RANGE SNACKING
DUO TERROIR**

**P.20 OUR RANGE SNACKING
DUO CRISTAL**

**P.21 OUR RANGE SNACKING
PAPER DRESSING**

OUR RANGE GREENGROCERY P.22

OUR RANGE GARDEN P.23

OUR RANGE HORTICULTURE P.24

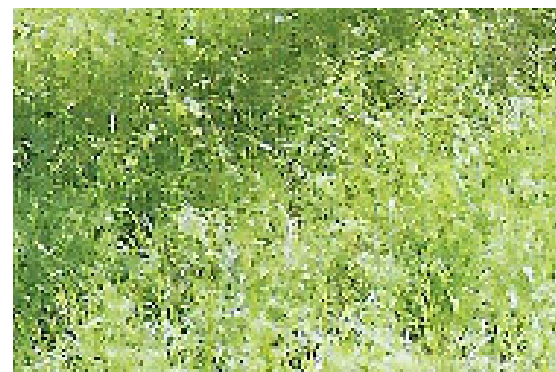
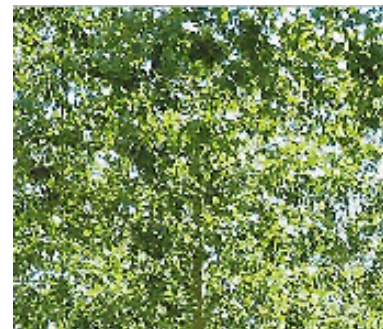
OUR RANGE BEVERAGE, BREWERY, BOTTLE & BIB P.26

OUR RANGE GIFT BOXES P.29

OUR RANGE DECORATION AND STORAGE P.30

INNOVATIONS & DEVELOPMENTS 2020 P.34

P.35 THEY TRUST US



Michael BRUNEAU +33(0)6 29 46 75 14 Dominique DUCOULOMBIER +33(0)6 80 76 82 01

<http://www.emballages-martin.com/> - <http://www.panier-bois.com/>

70 YEARS

OF INNOVATION AND ADAPTATION

TO BECOME A MAJOR ACTOR OF THE PACKAGING INDUSTRY

In 70 years, MARTIN Emballages has been able to respond to market evolution, accompany and anticipate the needs of its clients thanks to its knowledge on how to develop, adapt and innovate within its field of expertise.

Nowadays, establishment MARTIN gathers MARTIN Emballages (wooden packaging manufacturer), « La Scierie du Val de Sèvre » (the sawmill) and « La Forestière du Val de Sèvre » (logging company).

The History of a family, independent and innovative company :

- **In 1947**, it's on the property of an old tile factory that **Georges Martin buys a small sawmill where one saw was used to work out-sourced.**

- During the 50's, MARTIN flourishes thanks to the booming of dairies and the rise of wooden crates' manufactures in order to transport cheese.

- Claude joins his parents and take over the family company in 1970. **He turns the sawmill into a packaging company, introduces mechanisation and increases the sphere of customers.**

- **At the end of the 70's**, his son Jean-Pierre becomes fascinated by the sawmill and **contributes to its modernisation** after a training at Luchon's wood school.

- **At the end of the 80's**, to meet increasing demands, MARTIN acquires a neighbouring land, builds warehouses to provide a new production area **including a drying room and a storage facility** for wooden crates.

- Driven by this expansion, MARTIN invests in **a machine able to assemble and staple automatically wood pieces.** This modernisation stands as a watershed for the small family and homemade company taking an industrial path.

- **In 1991**, in a new warehouse, **the original saw is replaced by a modern and automatic one as well as a new rip saw.**

- **In 1992**, Val de Sèvre's sawmill becomes **an independent entity, separated from SA MARTIN Emballages**, created a few years ago.

- **In 1998**, Claude retires and his son Jean-Pierre takes the helm of the company.

- Facing food standards legislation, MARTIN Emballages' team manages to turn formerly **stapled wooden containers into glued wooden containers.** A **patent is registered in December 2007.**

- **In 2008**, MARTIN Emballages invests in its **first industrial robot to produce round wooden containers.** The company now counts 9 industrial robots.

- The same year, MARTIN EMBALLAGES hires several employees from a woodcutting company which just went bankrupt and creates « La Forestière du Val de Sèvres ».

- **In October 2015**, Jean-Luc BAILEY, coming from the car industry and seduced by the wood materiel, takes over the company.



Michael BRUNEAU +33(0)6 29 46 75 14 Dominique DUCOULOMBIER +33(0)6 80 76 82 01

<http://www.emballages-martin.com/> - <http://www.panier-bois.com/>

KEY FIGURES



THE ALLIANCE

OF NATURE, TRADITIONS AND INDUSTRY

Formerly sawmill, MARTIN Emballages has grown to become a SME/SMI which controls the whole production line while respecting the erstwhile know-how. Integration of the whole manufacture, industrial production or made to measure, MARTIN Emballages is able to meet the expectations of food processing industries as well as horticulture and various sectors. An almost unique case in the industry.

Zoom on MARTIN Emballages's expertise

WOOD PURCHASING

Our wood is bought in « Marais Poitevin » within in a radius of 150 km from our production site (less transport and CO2) from private individuals, poplar-based agro-forestry groups. Our wood is chosen by MARTIN's own lumberjacks for its mechanic features or aesthetic qualities (white, smooth and not pilling easily).



BARKING PROCESS

MARTIN Emballage strips the bark from log wood so to protect machines' blade. Barks (13% of logs) are sold locally to manufacture compost or for boiler room use.

SAWING

The heading saw converts wooden pieces to planks or boards. Then the edger turns boards into chevrons meant for dunnage, pallets manufacture or crates sides.



Michael BRUNEAU +33(0)6 29 46 75 14 Dominique DUCOULOMBIER +33(0)6 80 76 82 01

<http://www.emballages-martin.com/> - <http://www.panier-bois.com/>

UNREELING

After having striped the barks, logs are chopped on demand excluding knots and curvatures. **On the machine, every log is put in place in order to maximize the material.** Wooden logs are then transformed into sheets, mats, wooden strips, staves or circles. Waste is then grinded or sieved to produce paper pulp or mulching.

Through its know-how, it's the whole company which constantly rallies round to meet food industry norms, anticipate technical and aesthetic developments and thereby meet our customers needs.

ASSEMBLING

Two types of assembly enable the manufacture of our containers :

- Staple for hampers
- Glue for baskets (Patent registered in 2007 by Martin Emballage) with completely automatic machines.

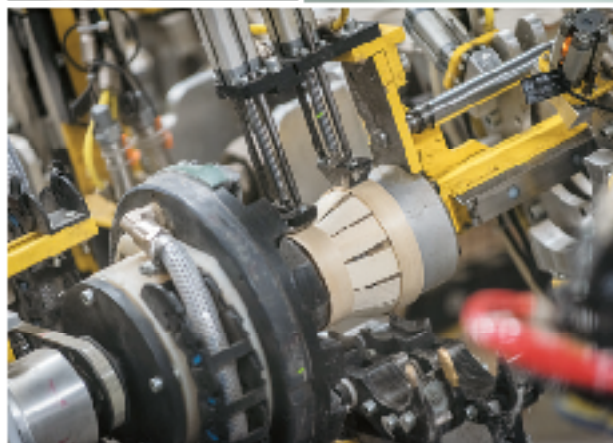
According to quantities, we assembly either manually or automatically wooden crates.



QUALITY CONTROL

During the whole process, from purchase to assembly, **MARTIN Emballages ensures a continuous monitoring.**

This is reflected by our customers loyalty and various awards (Innovation trophy in 2011, Lanly Trophy in 2016 and Oscar for packaging in 2017).



RESEARCH AND DEVELOPMENT

R&D at MARTIN Emballages, **it's every day, at every level and for everyone among the company.**

Industrial production or industrial tailor-made at MARTIN Emballages :

- **manufacturing a large range of products with more than 200 references** (containers, baskets, crates, pallets ...) to meet the various uses of its clients: dairy, cooked meats, smokery, grocery, liquids, bakery, plants, home furniture...
- **made to measure** : If its standard products do not meet its customers' expectations, MARTIN Emballages , accompany them in the creation of a new good or product and measures the feasibility of specific developments.



Michael BRUNEAU +33(0)6 29 46 75 14 Dominique DUCOULOMBIER +33(0)6 80 76 82 01
<http://www.emballages-martin.com/> - <http://www.panier-bois.com/>



The production chain control at MARTIN Emballages, it is :

- 30 000 m3 of wood per year,
- 30 km unreeled wood per day,
- 100% of wooden waste reused,
- 4 million of crates,
- 8 million of baskets.

+ Advantages for Martin Emballages customers

- Large range of products (+200 references),
- Possibility to tailor and customise products (printing, painting),
- Adaptability, rapidity et reactivity,
- Proximity contact with a family company
- Automated machines to produce on a large scale,
- 4 warehouses in France.



Nature friendly

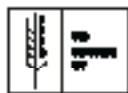
Through its logging industry, MARTIN Emballages has always understood the importance of balance between the use of natural resources and industrial production. MARTIN Emballages contributes to reforestation of exploited land by funding poplar planting.

Environmental awareness is present on the whole chain :

- **Proximity asset :** based in Augé, MARTIN Emballage is located in the heart of a region where poplar forests and food industries are abundant, explaining why MARTIN Emballages is able to provide a great local relationship with its customers : reduced transports, great reactivity on a supply chain matter, thus guaranteeing a true efficiency from an environmental and economic point of view.
- **Extensive integration** helps to limit Co2 emissions related to production process on site.
- **An eco-friendly manufacturing process :** wood, glues or colourants used in the compound of packaging are a 100% food grade, 100% recyclable, 100% French, 100% biodegradable.
- **A whole recycling system** enables Martin Emballages to reprocess waste fully into compost, sawdust, heating wood, mulching...



PEFC
Post European Forest Certification
 Certification guaranteeing wood coming from sustainable forests.



ISPM 15
International Standard for Phytosanitary Measures
 Required phytosanitary treatment to avoid import being infested by pest in wood packaging.



GROW
Good Practice Guide for Wood
 International organisation for professional of light packaging



HACCP
Good practice guide
 Food safety and hygiene procedures to apply to the manufacture of wood production by using HACCP method.

FNPF
French national federation of industries and wooden packaging.



Michael BRUNEAU +33(0)6 29 46 75 14 Dominique DUCOULOMBIER +33(0)6 80 76 82 01

<http://www.emballages-martin.com/> - <http://www.panier-bois.com/>



Martin Emballages designs and manufactures baskets **PEFC** made of poplar coming from sustainable forests and collected within in a radius of **150km** from our historical production site located in Augé, **Deux sèvres**, Nouvelle Aquitaine.

Martin Emballages teams master transformation and manufacture from **the purchase of standing wood till the manufacture of these baskets**. This know-how allows us to assure quality, reliability and a daily level of service for our customers.

These poplars are processed **without any treatment, food grade, recyclable, reusable, biodegradable** and often transformed into an **afterlife object**, pencil holder, storage boxes, firelighter...

Perfectly suitable for food industry, fruits and vegetables, dairy products but also horticulture, garden centre, home design stores, creative activities ; our containers will find their place in your line of expertise.

BASKET REFERENCE	ø TOP x ø BOTTOM x HEIGHT (in mm)*	CAPACITY (in L)
P67.55	80 x 65 x 50	0,21
P70.70	85 x 65 x 70	0,31
PA75.70	95 x 70 x 70	0,38
P97.70	110 x 90 x 60	0,47
PA97.70	110 x 90 x 60	0,47
P110.80	125 x 100 x 80	0,80
PA110.80	125 x 100 x 80	0,80
P133.60	155 x 125 x 60	0,93
P133.80	155 x 125 x 80	1,24
P163.60	180 x 155 x 65	1,45
PA163.60	180 x 155 x 65	1,45
P163.80	180 x 155 x 75	1,66
P163.100	180 x 150 x 100	2,21
P165.160	200 x 155 x 150	3,73

* internal dimensions

AVAILABLE OPTION

- transparent lid / wooden lid
- inside fabric / paper crate
- external closing cardboard
- marking / hemp handle

(see different ranges)

14 CAPACITY RANGE FROM 0,21L TO 3,8L

All of our capacities correspond to **usual grammages of food industry : from 125g to 10kg.**



Michael BRUNEAU +33(0)6 29 46 75 14 Dominique DUCOULOMBIER +33(0)6 80 76 82 01

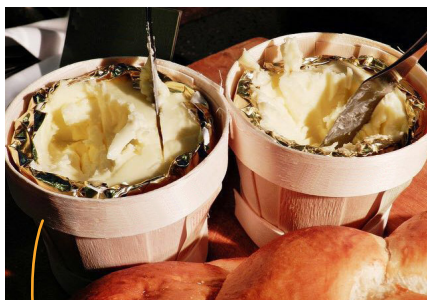
<http://www.emballages-martin.com/> - <http://www.panier-bois.com/>

OUR PRODUCTS
GLUED BASKETS



PANIER-BOIS .COM

GLUED BASKETS



LID OPTIONS



TRANSPARENT
 (See page 20)



WOOD
 (See pages 11,12 and 19)



(See dimensions page 8)



COLORED MARKING OPTION

Top and bottom



Michael BRUNEAU +33(0)6 29 46 75 14 Dominique DUCOULOMBIER +33(0)6 80 76 82 01
<http://www.emballages-martin.com/> - <http://www.panier-bois.com/>



For 70 years, Martin emballage has been designing **poplar container from "marais poitevin"**. Formerly used to transport mainly **oysters**, stapled baskets are now applying to garden stores, home design stores, in the kitchen ...

For **natural, warm and authentic material** lovers, our containers will easily adapt in your everyday way of life. They can be customised with **handles** made of hemp or fabric for a useful and cosy use (see page 24).

Don't wait any longer !

BASKET REFERENCE	ø TOP x ø BOTTOM x HEIGHT (in mm)*	CAPACITY (en L)
FPANG	215 x 205 x 45	1,56
BOU2	200 x 180 x 100	2,84
BOU3	210 x 180 x 125	3,74
BOU5	240 x 210 x 135	5,38
BOU226	260 x 235 x 90	4,33
BOU225	260 x 235 x 135	6,50
P175	255 x 180 x 190	6,14
P210	255 x 210 x 245	10,43



Horticultural baskets



PO67	80 x 60 x 70	0,35
PO75	100 x 65 x 105	0,57
PO62	65 x 55 x 160	0,45

* internal dimensions

**8 CAPACITY RANGE
FROM 1,56L TO 10,43L**

All of our capacities correspond to **usual grammage of food industry** :
from 125g to 10kg.



Michael BRUNEAU +33(0)6 29 46 75 14 Dominique DUCOULOMBIER +33(0)6 80 76 82 01

<http://www.emballages-martin.com/> - <http://www.panier-bois.com/>



LID REFERENCE	MATCHING BASKETS	Ø TOP x HEIGHT (in mm)*
CA133	P133.60 / P133.80	135 x 30
CA163	P163.60 / PA163.60 / P163.80 / P163.100	180 x 30
CBOU2P	BOU2	185 x 30
CBOU2	BOU2	185 x 30
CBOU3P	BOU3	200 x 30
CBOU3	BOU3	200 x 30
CBOU5P	BOU5	230 x 30
CBOU5	BOU5	230 x 30
CC165	P165.160	190 x 70
C175	P175	225 x 40
C210	P210 / BOU225 / BOU226	260 x 40
CC210	P210 / BOU225 / BOU226	265 x 55
CPANG	FPANG	220 x 40

* internal dimensions



Possibility to order lid only
OR lid with matching basket.



Michael BRUNEAU +33(0)6 29 46 75 14 Dominique DUCOULOMBIER +33(0)6 80 76 82 01
<http://www.emballages-martin.com/> - <http://www.panier-bois.com/>

OUR PRODUCTS

GLUED AND STAPLED BOWLS



FP135



CH135.30



CBOU2P



CBOU3P



CBOU5P



FPANG



BOWL REFERENCE

Ø TOP x HEIGHT (en mm)*

FP135

135 x 30

CH135.30

135 x 30

CBOU2P

185 x 30

CBOU3P

200 x 30

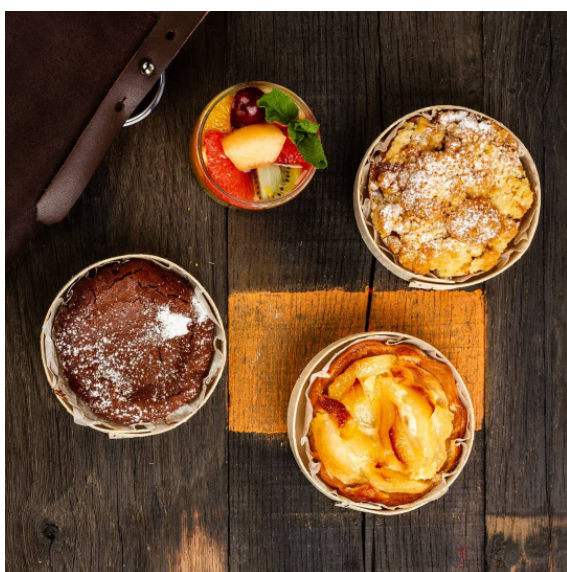
CBOU5P

230 x 30

FPANG

215 x 45

* internal dimensions





Wooden Crates and cases are perfectly meant for **food transport** as cheese, smoked fish, but also to **sell packaging** during festivities.

These crates and cases are also meant for any use since quality wood helps to promote your contents.

Manufactured with **unreeled wood** or **plywood** from poplars, these crates and cases are **certified PEFC, recyclable** and **biodegradable**.

Mastering the whole processing, from the purchase of standing wood within in a radius of 150 KM until the transformation on our production site in Deux-Sèvres, Martin emballages works continuously to ensure quality and availability of its more than 1000 references in four different warehouses in France.

Martin Emballages also meets your needs of **made-to-measure** or **customisation** (marking, silkscreen printing...).

Contact us and let's imagine together your dream packaging !



Michael BRUNEAU +33(0)6 29 46 75 14 Dominique DUCOULOMBIER +33(0)6 80 76 82 01

<http://www.emballages-martin.com/> - <http://www.panier-bois.com/>

OUR PRODUCTS

CRATES & CASES



PANIER-BOIS .COM

CRATE REFERENCE	LENGTH x WIDTH x HEIGHT (in mm)*
GOAT CHEESE OR ELSE <i>openwork bottom</i>	
A0225	175 x 90 x 30 (with clips)
A0223BD	220 x 150 x 50
A0376BD	220 x 150 x 90
A0356	245 x 205 x 50
C0454	250 x 185 x 55
C0361	250 x 185 x 75
A0590	260 x 240 x 55
C0529	275 x 185 x 55
C0360	290 x 190 x 90
A0365	310 x 220 x 55
A0372	310 x 220 x 90
C0480	310 x 220 x 105
A0431	320 x 240 x 55
A0597	320 x 240 x 70
A0440 A0440C	325 x 160 x 70 lid A0440
A0465BD	360 x 120 x 50
A1170	365 x 170 x 48
C0522	365 x 170 x 65
C0521	365 x 170 x 80
A0364	370 x 265 x 45
C0520	420 x 255 x 75
A0414	420 x 310 x 55
A0415	420 x 310 x 75
C0395	450 x 255 x 50

CRATE REFERENCE	LENGTH x WIDTH x HEIGHT (in mm)*
ROCAMADOUR <i>openwork bottom</i>	
R0139 (x6)	190 x 125 x 20 (no lid)
R0140 (x12)	250 x 190 x 30
R0201	260 x 250 x 50
R0153 (x15)	290 x 190 x 30
R0183	290 x 210 x 55
R0161 (x20)	310 x 230 x 30
R0172 (x30)	380 x 273 x 30
BRIE <i>openwork bottom</i>	
A0683	280 x 275 x 50
A0687	280 x 275 x 75
A0411	372 x 371 x 45
A0686	420 x 185 x 70
A0688	595 x 285 x 52
SAVOIE <i>openwork bottom</i>	
I0025	260 x 270 x 95
I0003	310 x 315 x 40
I0014	335 x 210 x 70
I0056	460 x 305 x 55
I0023	460 x 305 x 80
POTATOES & CONDIMENTS <i>openwork bottom</i>	
B0675B 2,5kg	275 x 195 x 100
A1164B 5kg	370 x 290 x 100
SMALL POT CRATES <i>openwork bottom</i>	
A0965 (x16)	264 x 260 x 60
A0966 (x24)	404 x 260 x 60
MEAL TRAY <i>filled bottom</i>	
B0255	265 x 265 x 45

* internal dimensions

MADE TO MEASURE POSSIBLE
Contact us

EMBALLAGES BOIS
MARTIN

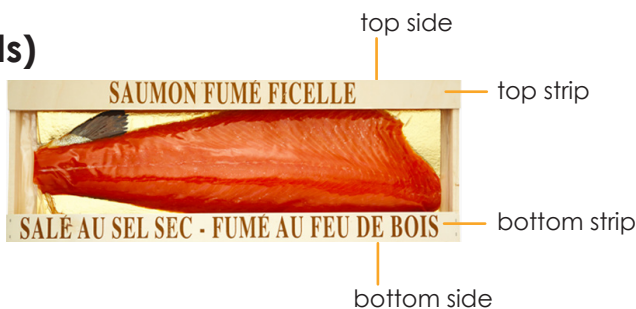


Michael BRUNEAU +33(0)6 29 46 75 14 Dominique DUCOULOMBIER +33(0)6 80 76 82 01

<http://www.emballages-martin.com/> - <http://www.panier-bois.com/>



Wooden boxes (standards)



BOX REFERENCE	LENGHT x WIDTH x HEIGHT (in mm)*	GRAMMAGE (indicative)	BOX DESIGNATION
B0270	660 x 210 x 40	900g	no strip
B0269	650 x 230 x 35	900g	top and bottom strips marked / 1 stapled strip
B0269BN	650 x 230 x 35	900g	neutral strips / 1 stapled strip
B0269AG	650 x 230 x 35	900g	top and bottom strips marked / 2 stapled strips
B0269BN2AG	650 x 230 x 35	900g	neutral strips / 2 stapled strips
B0369SB	450 x 170 x 35	400g	no strip
B0369BN	450 x 170 x 35	400g	neutral strips / 1 stapled strip
B0369BN2AG	450 x 170 x 35	400g	neutral strips / 2 stapled strips

* internal dimensions

Smoked fish boxes made of **plywood** from poplar and stapled, **silkscreen printed** on request.



B0369BN

MADE TO MEASURE POSSIBLE
Contact us

Cardboard boxes (on request) - woodtray + kraft case



CUSTOMISATION
Cardboard cutting and printing



Michael BRUNEAU +33(0)6 29 46 75 14 Dominique DUCOULOMBIER +33(0)6 80 76 82 01

<http://www.emballages-martin.com/> - <http://www.panier-bois.com/>

OUR PRODUCTS
TRAPEZIENNES

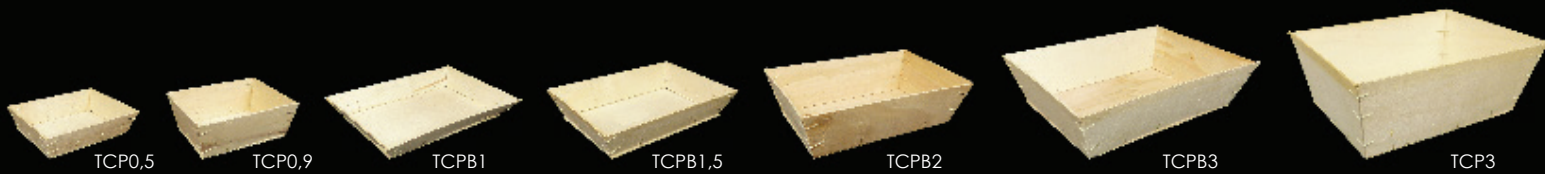


Unrolled wood



6 sizes available in stock + 17 sizes on request

Plywood



7 sizes available in stock + 9 sizes on request

Coming from **trapezoidal hampers** well known from oyster farmers, these wooden hampers are made of **PEFC unrolled or ply- poplar wood**.

They will become essentials for **holidays packaging, giftbaskets**, or to **replace your plastic or cardboard storage** in the house.

Trapeziennes are also **very useful for your fruits and vegetables harvest** but also for **horticulture**.

Trapeziennes can be personalized with **one or two hemp handles*** to ease the **pick up** but also with a **jute dressing*** for a warm and natural home design.

*options on request



Storage - Decoration - Giftbaskets - Packaging - Garden baskets - French manufacture
Always a safe choice to go for Martin's Trapeziennes !



Michael BRUNEAU +33(0)6 29 46 75 14 Dominique DUCOULOMBIER +33(0)6 80 76 82 01
<http://www.emballages-martin.com/> - <http://www.panier-bois.com/>



BASKET REFERENCE	LENGHT x WIDTH x HEIGHT (in mm)*
UNROLLED WOOD	
TBD1	280 x 190 x 43
TBD1,5	300 x 200 x 49
TBD2,5	300 x 200 x 74
TBD3,5	300 x 200 x 105
TP3	350 x 250 x 82
TP5	350 x 250 x 104
PLYWOOD	
TCP0,5	200 x 150 x 44
TCP0,9	200 x 150 x 70
TCPB1	300 x 200 x 36
TCPB1,5	300 x 200 x 54
TCPB2	300 x 200 x 68
TCPB3	300 x 200 x 93
TCP3	305 x 250 x 72

* external dimensions



OPTION

Plywood lid on request



Michael BRUNEAU +33(0)6 29 46 75 14 Dominique DUCOULOMBIER +33(0)6 80 76 82 01
<http://www.emballages-martin.com/> - <http://www.panier-bois.com/>

OUR RANGE
SNACKING



Considered as only transport packaging for a long time, our cases and baskets are now real assets for snacking industry. This range of products is naturally fitting new trends of product offer and customers requests.

Ideally designed, our snacking range **DUO Fraicheur** offers you packaging solutions to display your goods optimally. You can add our **transparent lid** (range DUO Crystal) so your customers are **attracted by its content**. Every element can be **customisable** (basket or tray + lid) : marking, logo, colours...

This range offers numerous **possibilities of original packaging for snacking, standard or made to measure**, Martin Emballages is ready to realise your projects !



Meal tray - wooden meal tray + cardboard lid



+ CCB0255 (cardboard lid)

(See dimensions page 14)

CUSTOMISATION 

Create your own box or meal tray following our standards or made to measure (contact us).



Michael BRUNEAU +33(0)6 29 46 75 14 Dominique DUCOULOMBIER +33(0)6 80 76 82 01
<http://www.emballages-martin.com/> - <http://www.panier-bois.com/>

OUR RANGE

SNACKING DUO TERROIR



PANIER-BOIS .COM

ONLY WOOD



Possible combinations



(See dimensions pages 8, 10, 11 and 12)



Michael BRUNEAU +33(0)6 29 46 75 14 Dominique DUCOULOMBIER +33(0)6 80 76 82 01

<http://www.emballages-martin.com/> - <http://www.panier-bois.com/>

SNACKING

OUR RANGE

SNACKING DUO CRISTAL



PANIER-BOIS .COM



WOOD + ALIMENTARY CRISTAL A/RPET



RPET lid with clips
with 2 holes to allow aeration
(good stability during transport,
piled up easily)
CTC references



(See dimensions page 8, contact us for any other dimensions)



or
RPET cristal lid
(piled up)
CT references



OPTION

Printing on lid



Michael BRUNEAU +33(0)6 29 46 75 14 Dominique DUCOULOMBIER +33(0)6 80 76 82 01
<http://www.emballages-martin.com/> - <http://www.panier-bois.com/>

OUR RANGE

SNACKING INNOVATIONS 2019 : PAPER DRESSING



PANIER-BOIS .COM

S
N
A
C
K
I
N
G



P163.80



+



=



P97.70



P67.55

(See dimensions page 8)



Your baskets can now be dressed with paper units,
a better display to highlight your product !

EMBALLAGES BOIS
MARTIN



Michael BRUNEAU +33(0)6 29 46 75 14 Dominique DUCOULOMBIER +33(0)6 80 76 82 01

<http://www.emballages-martin.com/> - <http://www.panier-bois.com/>

OUR RANGE
GREENGROCERY



PANIER-BOIS .COM

Baskets

100% compostables !

WOOD + KRAFT



P67.55 P75.70 P97.70 P133.60 P133.80 PA163.60 P163.60 P163.80 P163.100 P165.160

(See dimensions page 8, standard weights from 125g to 3kg)

CUSTOMISATION

Cardboard cutting and printing



STAND OUT ! DEFINE YOUR DREAM PACKAGING ...

Crates



A1164B



B0675B

(See dimensions page 14)



LID OPTION

Made of plywood or unrolled wood, available on request.



Michael BRUNEAU +33(0)6 29 46 75 14 Dominique DUCOULOMBIER +33(0)6 80 76 82 01

<http://www.emballages-martin.com/> - <http://www.panier-bois.com/>

Stapled basket 1 handle



BOU2A1 BOU3A1 BOU5A1 BOU226A1 BOU225A1 P175A1 P210A1

Stapled basket 2 handles



BOU2A BOU3A BOU5A BOU226A BOU225A P175A P210A

(See dimensions page 10)



LID AVAILABLE
(See page 11)

Especially made for horticulture



PO67 PO75 PO62



Small pot crates (See dimensions page 14)



A0965 (x16)

A0966 (x24)



(See dimensions page 10)



From 2,84L to 10,43L

An **eco-friendly production** : fulfil your **plantation without any unpotting** !

- Planting directly into soil
- Preserving roots
- Facilitating regrowth
- Reducing plastic waste and recycling costs
- Removing plastic pots
- Wood returning to earth
- Saving production time
- Reducing transport and handling costs
- Pots made from local poplar
- 7 available volumes
- Reduced carbon footprint

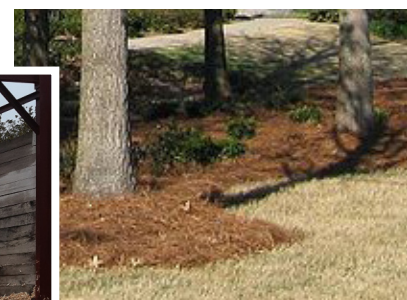


Poplar mulching/woodchips

As the last step of our **wood valorisation**, we process the wood we did not use into **woodchips**. Mulching contains **non treated wood**, is a 100% natural and ideal for **soil protection** and **embellishment**, it **limits its watering and the spread of weeds**.

Mulching is also important in the **heating control**.

Available **only through a loose form** in order to avoid plastic, contact us for more details !



Michael BRUNEAU +33(0)6 29 46 75 14 Dominique DUCOULOMBIER +33(0)6 80 76 82 01

<http://www.emballages-martin.com/> - <http://www.panier-bois.com/>

Watertight planters

Basket + internal transparent protection



Decorate your house : put your plants directly in our planter and embellish your house in an eco-friendly way !

Hessian collection

Our pots combine **wood** and **jute** which aids the **uptake of water**. They are made of two beautiful, **natural materials** and look good in any setting - in an office or at home.

These pots are **eco-friendly** and are designed to **retain the maximum amount of water**, as well as insuring that the plant only takes the water that it needs - so there is no over-watering ! Which means you have a healthier, happier plant !



From 0,21L to 10,43L

PERFECT COMBINATION OF **WOOD** AND **JUTE** FOR
A **REASONABLE WATER CONSUMPTION** !



OUR RANGE

BEVERAGE, BREWERY, BOTTLE & BIB

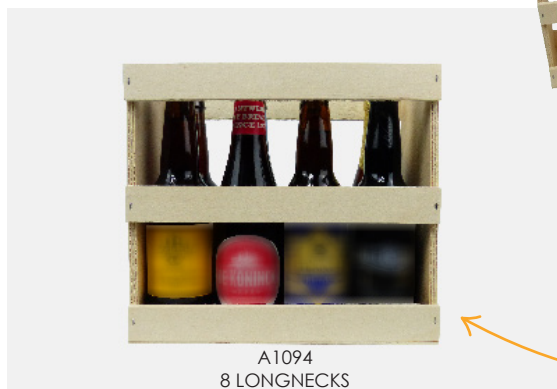


PANIER-BOIS .COM

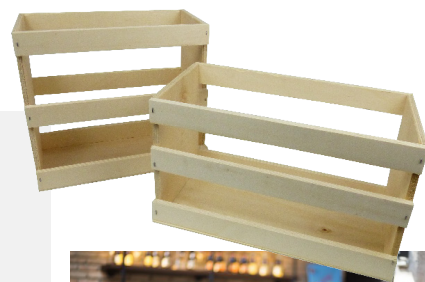
Beer cases



A0978
8 STEINIES



A1094
8 LONGNECKS



Cases, half-metre beer, bottle cases made from **plywood of poplar** and stapled.

Silkscreen possible on request.

Sliding lids on both half metre beer or double bottles cases.

CASE REFERENCE

LENGHT x WIDTG x HEIGHT (in mm)*

A0978
8 STEINIES

295 x 145 x 175

A1094
8 LONGNECKS

240 x 120 x 200

A1003
6 STEINIES

425 x 75 x 180

A1020
8 LONGNECKS

495 x 65 x 240

* internal dimensions

1/2 metre beer



A1003
6 STEINIES



A1020
8 LONGNECKS



Bottle cases (cases and bottles sold apart)



A1005

A0975



CASE REFERENCE

LENGHT x WIDTG x HEIGHT (in mm)*

A0975
plywood case
1 bottle

340 x 95 x 90

A1005
plywood case
2 bottles

340 x 193 x 90

* internal dimensions



Alcohol is harmful for your health, please drink responsibly.

Michael BRUNEAU +33(0)6 29 46 75 14 Dominique DUCOULOMBIER +33(0)6 80 76 82 01

<http://www.emballages-martin.com/> - <http://www.panier-bois.com/>

OUR RANGE

BEVERAGE, BREWERY, BOTTLE & BIB

Are you looking for a pack really standing out of ordinary ? Are you expected to be seen and recognized on tables, at cocktail receptions, in stores or wine shops ?

Martin Emballages designed and developed Tonly® for plastic bags of liquids (BIB™), wine, rum, fruit juices, oils, vinegar, milk, syrup...



PANIER-BOIS .COM

Tonly®
NATURAL PACK



Tonly meets your desire, coats your contents, embellishes your work and makes visible what appeared unnoticed.

TONELY® : an authentic, natural, pleasant, modern and warm packaging made in France.



- 1 EXTERNAL CLOSING STRIP OF CARDBOARD PEFC
- +
- 2 WOODEN BASKETS
- +
- 1 CARDBOARD PROTECTION BELT



HEIGHT (in mm) 200
ø MAXIMUM (in mm) 200

Alcohol is harmful for your health, please drink responsibly.



Michael BRUNEAU +33(0)6 29 46 75 14 Dominique DUCOULOMBIER +33(0)6 80 76 82 01

<http://www.emballages-martin.com/> - <http://www.panier-bois.com/>

BEVERAGE, BREWERY, BOTTLE & BIB

OUR RANGE

BEVERAGE, BREWERY, BOTTLE & BIB

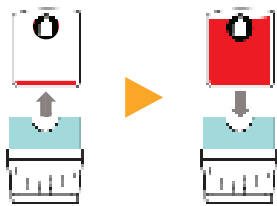


PANIER-BOIS .COM



REUSABLE PACK

Made of 2 baskets, it can easily find a second life through home decoration, storage, wood-burner and barbecues.



CUSTOMISABLE PACK

For a limited edition, a specific event, a vintage... **The external closing strip of cardboard can be four printed even from small quantities on** (min. 100 u.).

Tonely can also be delivered **with a cardboard handle** which is assembled on the external strip.

According to your design, **the price range of a Tonely with external strip can fluctuate between 3 and 5 €.**

Tonely can also be coloured with natural and a 100% alimentary material, with an inscription on top and bottom circles, or be equipped with a drop less protection.



100% NATURAL PACK



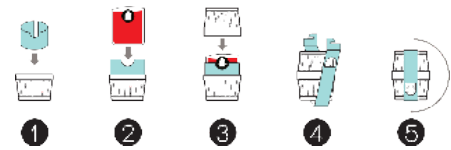
- Staves are made of **poplar wood*** and coming from sustainable forest industry.
- Baskets' staves and rings are **assembled with a glue compliant with food standards and biodegradable** (Patent 2007 MARTIN Emballages)
- The outside closing strip is made of **cardboard PEFC and recyclable.**
- The plastic goatskin is also eco-friendly and recyclable.

*POPLAR WOOD

Poplar is a good quality wood which has the particularity of growing fast (around 18 years to be mature) on poor soils. It's a very softwood, easy to work on and odourless. It's bark is even edible !

A FAST SETTING PRODUCT

Tonely was especially designed to be as simple as possible for its customers : winemakers, juice or oil manufacturers ... Tonely does not imply investing in an assembly machine for beverage companies.



CUSTOMIZE YOUR DESIRES !



Michael BRUNEAU +33(0)6 29 46 75 14 Dominique DUCOULOMBIER +33(0)6 80 76 82 01

<http://www.emballages-martin.com/> - <http://www.panier-bois.com/>

Crates & cases



(See dimensions page 14)

Stapled baskets



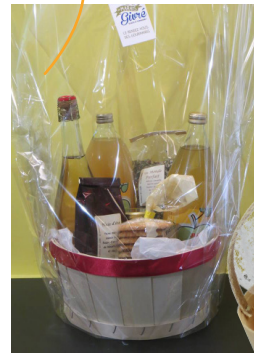
(See dimensions page 10)



Glued baskets



(See dimensions page 8)



OPTIONS

Contact us

FABRIC



COLORED MARKING



HEMP HANDLE



OUR RANGE

DECORATION & STORAGE



PANIER-BOIS .COM

Made with **poplar wood**, containers for storage and home decoration cunningly combine **lightness** and **robustness**. The wood's warmth and simplicity will become a must have for a cosy home environment. Coming from sustainable cultivation of poplar of **Marais Poitevin**, these baskets have loads of qualities : **natural, treatment less, recyclable but also 100% French !**

For a wholesome, natural and fashionable house, choose the Martin's baskets ! **15 models** available. On your mark ? Set, tidy !



Glued baskets



P110.80 P133.60 P133.80 P163.60 P163.80 P163.100 P165.160

(See dimensions page 8)

Stapled baskets



FPANG BOU2 BOU3 BOU5 BOU226 BOU225 P175 P210

(See dimensions page 10)

Stapled baskets 2 hemp handles



BOU2A BOU3A BOU5A BOU226A BOU225A P175A P210A

Stapled baskets 1 hemp handle



BOU2A1 BOU3A1 BOU5A1 BOU226A1 BOU225A1 P175A1 P210A1

(See page 23)



Michael BRUNEAU +33(0)6 29 46 75 14 Dominique DUCOULOMBIER +33(0)6 80 76 82 01

<http://www.emballages-martin.com/> - <http://www.panier-bois.com/>

OUR RANGE

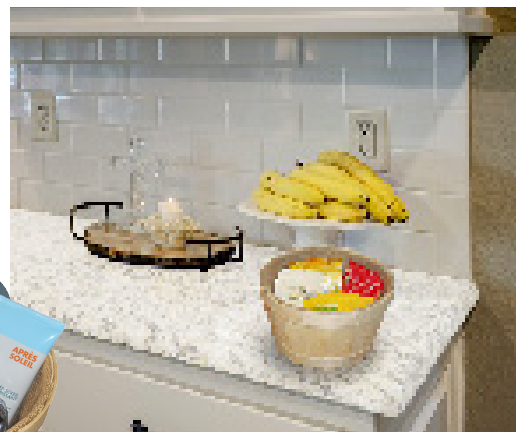
DECORATION & STORAGE



PANIER-BOIS .COM

DECORATION & STORAGE

Fabric garnished baskets



Michael BRUNEAU +33(0)6 29 46 75 14 Dominique DUCOULOMBIER +33(0)6 80 76 82 01
<http://www.emballages-martin.com/> - <http://www.panier-bois.com/>

OUR RANGE

DECORATION & STORAGE



PANIER-BOIS .COM



CREATE YOUR OWN **ATMOSPHERE** BY COMBINING **NATURE** AND **TIDYING** !



Michael BRUNEAU +33(0)6 29 46 75 14 Dominique DUCOULOMBIER +33(0)6 80 76 82 01

<http://www.emballages-martin.com/> - <http://www.panier-bois.com/>



Storage & home design sets, natural wood or jute, 0, 1 or 2 hemp handles you will fall for our decorative sets.

The **hessian collection** becomes a real essential to your **storage and interior design**. We provide a range of **storage sets** of various sizes to meet your needs. For a **healthy and natural environment, beautiful and cosy place**. Go for wood !

Many **options** available : natural wood or jute, 0, 1 or 2 hemp handles you will fall for our decorative sets.

Storage sets examples :

From 2,21L to 10,43L



From 0,46L to 6,50L

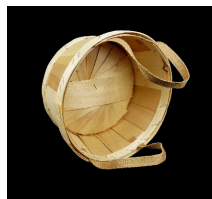


From 1,24L to 6,50L



GARDEN, PROTECT, PRESERVE, DECORATE, TIDY UP !

OPTIONS



hemp handles



jute



hemp handles + jute



Michael BRUNEAU +33(0)6 29 46 75 14 Dominique DUCOULOMBIER +33(0)6 80 76 82 01

<http://www.emballages-martin.com/> - <http://www.panier-bois.com/>



Block of butter



STUDY, DESIGN, DTP AND REALISATION OF YOUR PROJECT

Micro-wave adapted

Cooked meals, frozen food, or home made, they can all be micro-waved !



Bio-distributors



Boîte à sucre



Square range



————— GET OUT YOUR PENCIL ! —————



THEY TRUST US

PANIER-BOIS .COM



DEAN & DELUCA



PALAIS DU SAUMON



PRINTEMPS
PARIS HAUSSMANN

RÉAUTÉ
CHOCOLAT
NIORT



Michael BRUNEAU +33(0)6 29 46 75 14 Dominique DUCOULOMBIER +33(0)6 80 76 82 01

<http://www.emballages-martin.com/> - <http://www.panier-bois.com/>

A TEAM AT YOUR SERVICE

Michael BRUNEAU +33(0)6 29 46 75 14
Dominique DUCOULOMBIER +33(0)6 80 76 82 01
commercial@emballages-martin.com

